

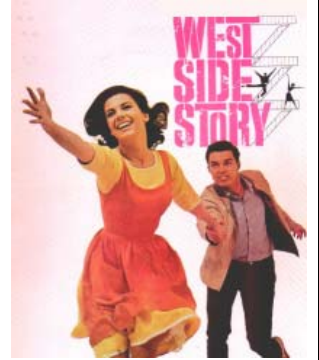
Student Link

Student Name: _____

INSTRUCTIONS

Before you begin your search about "West Side Story", you should first think about what musical theatre is. In StudentLink, click on **Grade 8** ➔ **Arts** ➔ **Musicals 101**.

1. Read the definition of what a musical is and rewrite it in your own words below.
2. By what other names has musical theatre been called over the years? Name any 3.
3. What are the 3 essential qualities required to produce a great musical?



4. What **musical theatre productions** have seen or know about?



TRIVIA QUESTION: What hit musical had its world premiere in Toronto?

Hint: This musical is based upon a very popular fantasy novel series, written by:

5. Just as most things do, musical theatre can have both its benefits and drawbacks. List below any ONE advantage and any ONE disadvantage that **you** think might be associated with musical theatre. *You may respond as an audience member, actor, director or producer.

Advantage:



Disadvantage:



6. If you think about it, actors who perform in musical theatre must be skilled in 3 disciplines: in theatre terms, they're called a **triple threat**.

A Triple Threat can: _____
 _____ &



Don't know the answer? Check out the logo in the following website to help you find the 3 disciplines <http://www.hcartarts.ca/triplethreat.htm>



Student Name: _____

WEST SIDE STORY

7. To begin your search about the musical "*West Side Story*", go back to *Grade Eight/ArtsWest Side Story Study Guide #1*. Read only the "*About West Side Story*" section. This musical is an adaptation of Shakespeare's classic story of *Romeo & Juliet*. **Complete a chart to briefly compare some aspects of these two stories.**

	Romeo & Juliet	West Side Story
SETTING (time & place)		
CONFLICT (who's involved)		
THEMES		



8. To examine the conflicts more closely, click on "*West Side Story Study Guide #2*" in StudentLink and scroll down to the **Characters** chart. Looking at the characteristics of and relationships between certain groups and individuals described on this page, **create a list of three potential conflicts** that could arise.

Conflict could occur between: (name people or groups)

1. _____
2. _____
3. _____

What might be the cause of each conflict?

1. _____
2. _____
3. _____

9. Scroll down to the bottom of the page and click on **directory** then Read through the lyrics to the song "*Gee Officer Krupke*".



Song Lyrics

10. **Journal Writing:** Although *West Side Story* was written in the 1950's, it is still relevant in terms of social issues, even today. Write your own thoughts to the following questions:

- A) Is this song funny or serious? Explain why you think so.
- B) What social issues (individual, society, family, etc) are addressed in this song? Of these issues, which are still problems found in our present day society?

