

Student Link

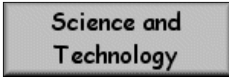



Lesson Activity for Grade (Science : Human Body)

PAGE

A

Student Name: _____

INSTRUCTIONS

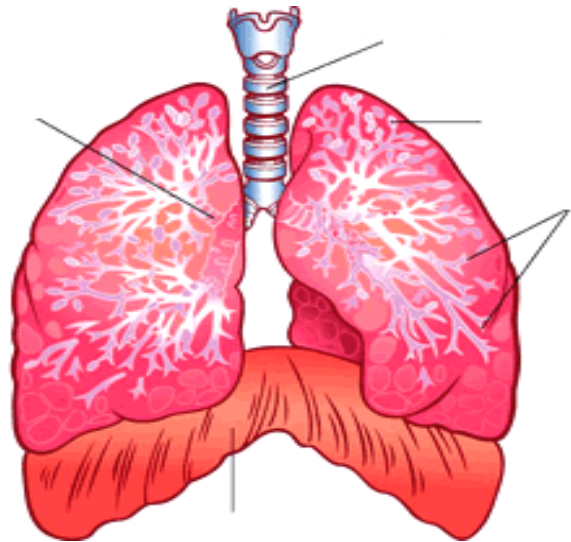
1. Go into Student Link and click on the grade five door.
2. Click on 
3. Under the heading of Human Organ systems, click on 
4. Under the title My Body, choose Lungs!
5. On the side menu, click on . On the moving menu, choose Lungs. To answer the following questions, you can watch the Movie, or read the article 

A.



Label the diagram with the words below.

Diaphragm Bronchioles
Trachea Alveoli Bronchus



B1. Name two ways you can love your lungs.

_____ & _____

2. Explain how smoking can hurt the following parts of the lung:

Alveoli:

Lung Cells:

Cilia and Trachea:

Student Name: _____



C. Number the following sentences from 1 to 12 to put them in the correct order of how we inhale and exhale.

- _____ The air goes through the bronchioles and out the bronchi.
- _____ On the way down the windpipe, tiny hairs called cilia move gently to keep mucus and dirt out of the lungs.
- _____ The air goes through series of branches in your lungs, through bronchi and bronchioles.
- _____ Next, the air travels up and out the trachea and finally out through your mouth and nose.
- _____ Your rib muscles also lift the ribs up and outward to give the lungs more space.
- _____ Alveoli allows oxygen from the air to pass into your blood through their walls into tiny capillaries that surround it.
- _____ Your diaphragm contracts and flattens out. This allows it to move down, so your lungs have more room to grow large as they fill up with air.
- _____ Your rib muscles become relaxed, and your ribs move in again, creating a smaller space in your chest.
- _____ When it is time to exhale, your diaphragm relaxes and moves up, pushing air out of the lungs.
- _____ The oxygen depleted blood comes back through the capillaries and the wastes enter the alveoli.
- _____ The air heads down your trachea or windpipe.
- _____ The air ends up in the 600 million alveoli. As they fill up with air, the lungs get bigger.